

# Spectral analysis of inter-channel scattering in the QH regime

N. Paradiso<sup>1</sup>, S. Heun<sup>1</sup>, S. Roddaro<sup>1</sup>, G. Biasiol<sup>2</sup>, L. Sorba<sup>1</sup>, F. Beltram<sup>1</sup>

<sup>1</sup>*NEST, Istituto Nanoscienze-CNR and Scuola Normale Superiore, Pisa, Italy*

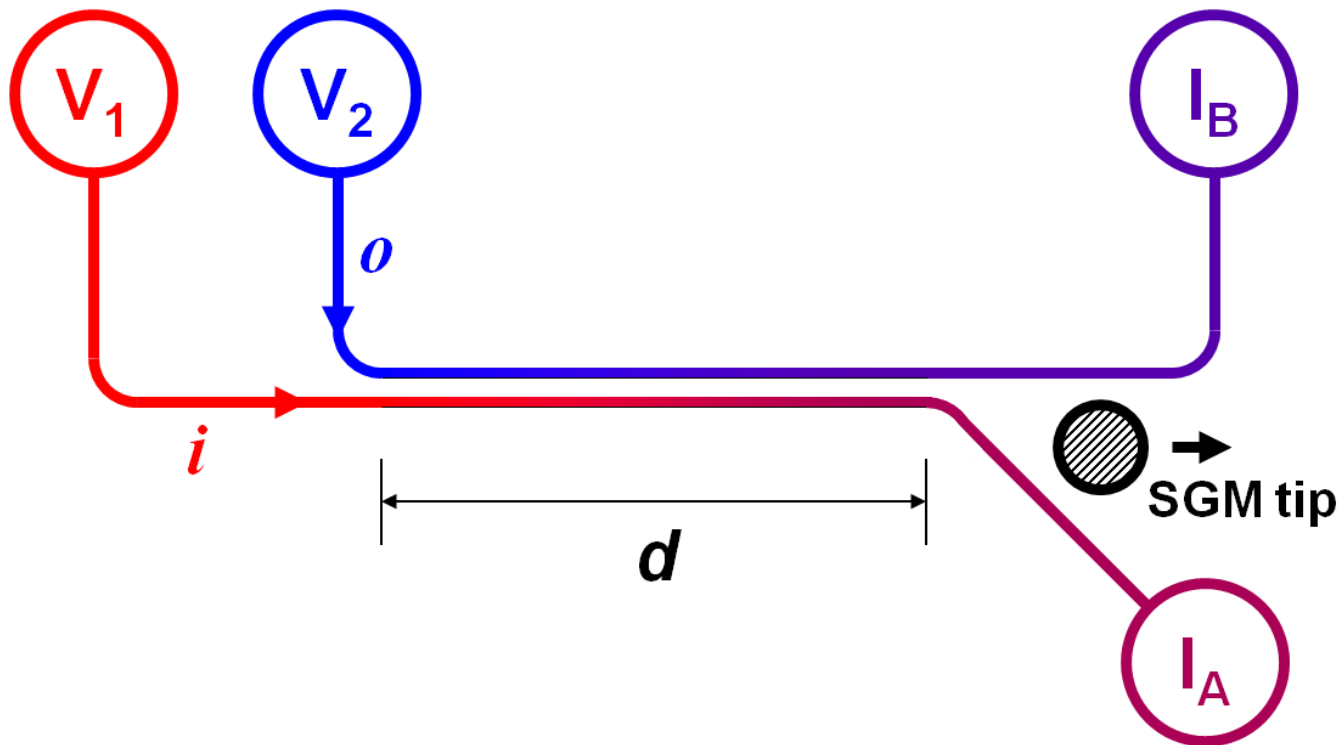
<sup>2</sup>*Istituto Officina dei Materiali-CNR, Laboratorio TASC, Basovizza (TS), Italy*

National Enterprise for nanoScience and nanoTechnology

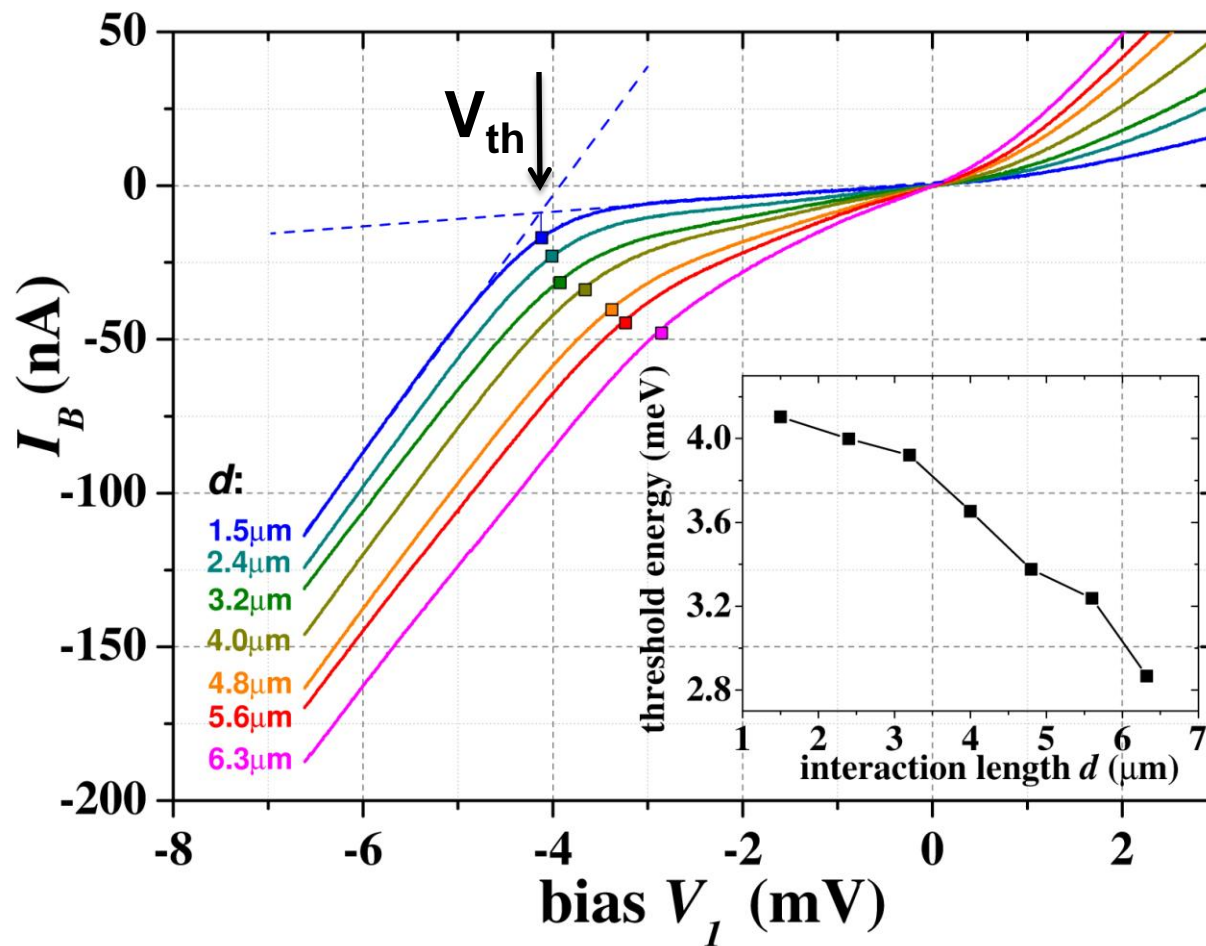


NEST

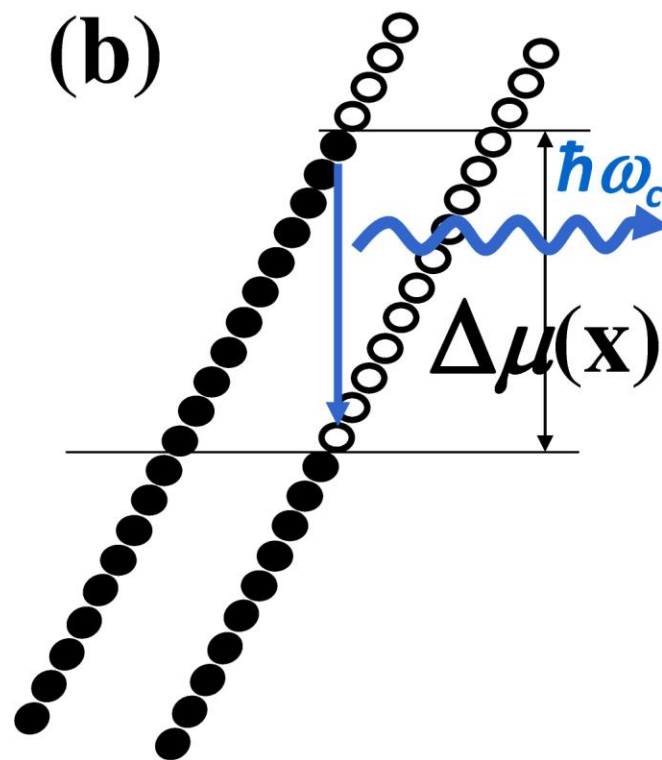
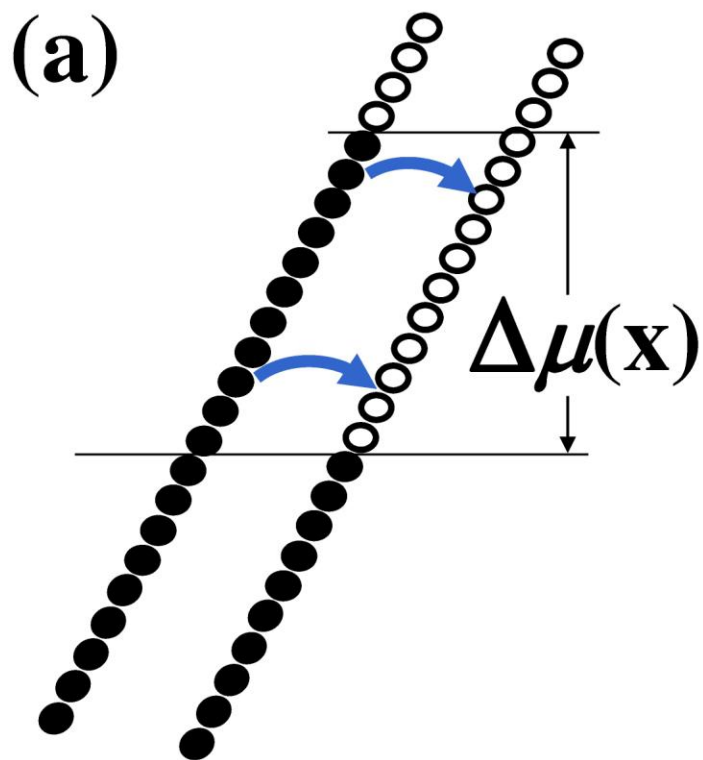
# Introduction



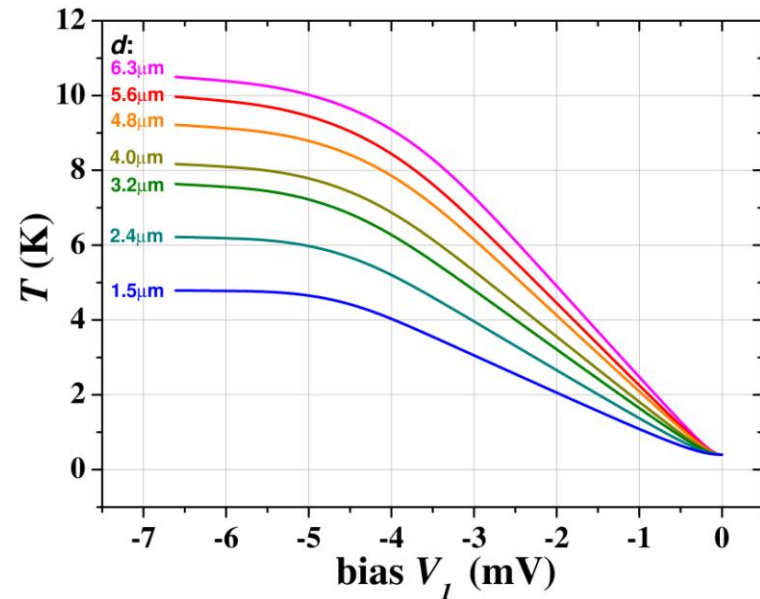
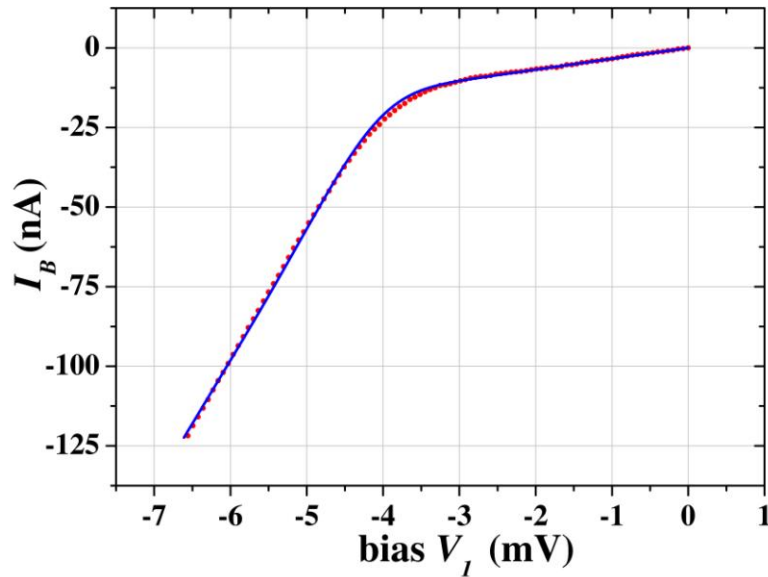
# I-V-curves



# Model for inter-channel scattering



# I-V curve analysis



- Excellent fit with one free parameter
- Model captures all relevant features
- Threshold shift due to electron heating